

Technical Specification

Principles

Tri-angle Laser Scatter, Flow Cytometry, Chemical Dye method for 5-part differential analysis and WBC counting

Electrical Impedance method for RBC & PLT counting

Non-cyanide method for hemoglobin testing

Parameters

23 Reportable Parameters CBC:
Whole Blood Mode: WBC, Lym#, Neu#, Mon#, Eos#, Bas#, Lym%, Neu%, Mon%, Eos%, Bas%, RBC, HGB, HCT, MCV, MCH, MCHC, RDW-CV, RDW-SD, PLT, MPV, PDW, PCT.
4 Research Parameters: ALY#, LIC#, ALY%, LIC%
3 Histograms: WBC, RBC, PLT
3 Scattergrams for WBC Differential and 1 for Basophil measurement

Sample Volume

Whole blood mode 15 μ L

Capillary mode 15 μ L

Pre-diluted mode 20 μ L

Throughput

60 Samples / hour

Display

10.4"Intuitive color touch screen

Multi- Language

Chinese, English available
Spanish, Portuguese,Russia,French under development

Data Storage Capacity

Up to 50,000 results including numeric and graphical data

Communication

LAN port support HL7 protocol

Interface

4 USB ports, 1 LAN connection

Support Bi-directional LIS

Printout

External laser printer/ Inkjet printer, various printout formats and customized formats

Operating Environment

Temperature: 10%~30%

Humidity: 20%~85%

Air pressure

70kPa~106kPa

Power requirement

A.C100V~240V (50/60Hz), \leq 250VA

Dimension

360mm(L) x 470mm(W) x 430mm(H)

Weight

28KG



MS-H650

Auto Hematology Analyzer

Accessible Utilities In Optimizing Hematology

MEDICALSYSTEM BIOTECHNOLOGY CO., LTD.

ADD: No.299, Qiming South Road, Yinzhou District, Ningbo City, Zhejiang Prov. China
TEL: +86-574-55337009 FAX: +86-574-88231889
ZIP Code: 315104 E-mail: sales@nbmedicalsystem.com



www.nbmedicalsystem.com





Accurate and reliable



Bi-directional interface



User-friendly



Safe and secure

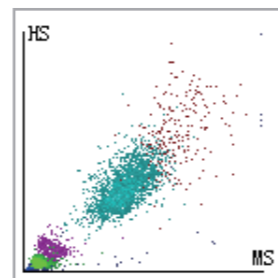
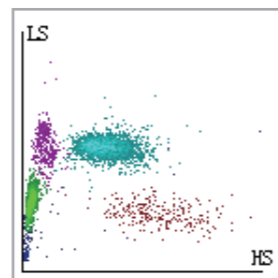
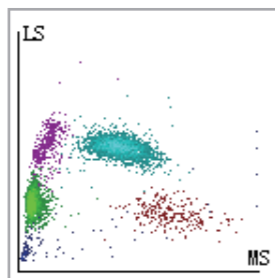
Product Feature & Specification

Throughput		Intelligent Flagging for Pathological Samples	
60 Samples/hour		10.4 inch large TFT touch screen with user-friendly software	
Result Performance		Reagent	
Linearity	Precision(CV%)	DIL-C Diluent, LYC-1 Lyse , LYC-2 Lyse , CLE-P Cleanser	
WBC 0~300 x 10 ⁹ /L	≤2.0%(4.0~15.0)	Carryover	
RBC 0~8.5 x 10 ¹² /L	≤1.5%(3.5~6.0)	WBC≤0.5%	
HGB 0~250g/L	≤1.5%(110~180)	RBC≤0.5%	
HCT 0~67%		HGB≤0.5%	
PLT 0~3000 x 10 ⁹ /L	≤4.0%(150~500)	PLT≤1.0%	
MCV	≤1.0%(70~120)fL	Automatic floating discriminators for WBC, RBC,PLT counting	
Digital Sheath-Flow		Auto sample clot detection and unclotting function	
		Good reproducibility	



The analysis has minimized required sample volume to 15µL making it easier for pediatric and geriatric patients.

The Real Dual-Optical counting channels enable the DIFF and BASO to be analyzed more precisely and efficiently



- A LAN connection and 4 USB ports for mouse, keyboard, barcode scanner and data transmission



- User-friendly interface and comprehensive data management



- Only 2 Reagent (Dilute, Lyse) for routine testing, 1 Reagent (Cleanser) for regular maintenance

- 23 reportable and 4 research parameters CBC
- 3 histograms (WBC, RBC, PLT) and 3 scattergrams for WBC differential and 1 dedicated to Basophil measurement
- User-friendly interface and easy operation with intuitive color touch screen
- Innovative technology incl. Tri-angle Laser Scatter, Flow Cytometry, Chemical Dye
- Open Tube Sampling Mode for whole blood, capillary, pre-diluted
- Minimized sample volume to 15µL

Compact and Cost Effective Hematology Platform with Laser Optical Counting Technology

